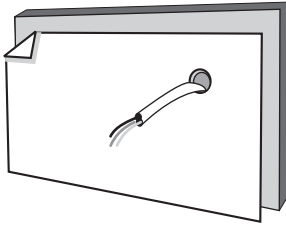


OVER AIR BARRIER Installation Instructions (new construction)

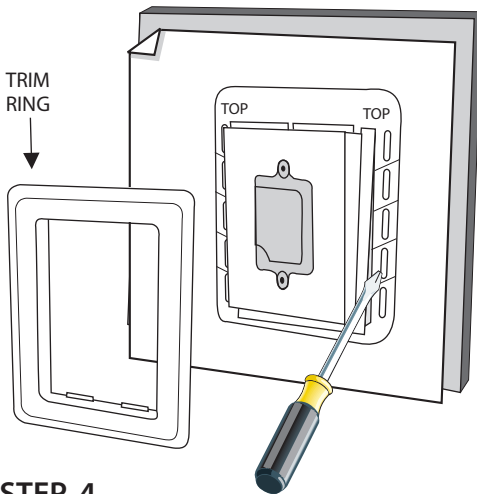
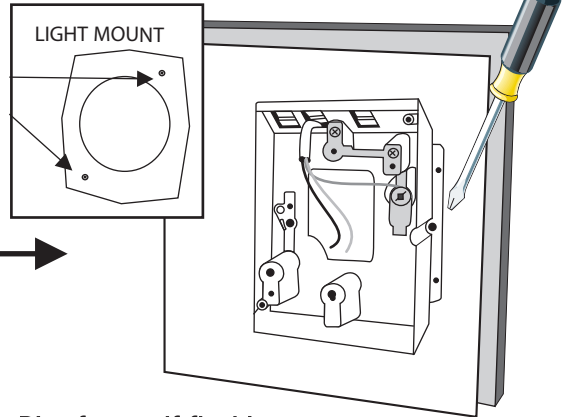


STEP 1

- Drill 3/4" hole through exterior wall sheeting.
- Install Exterior Air Barrier over wall sheeting.
- Extend electrical wire min. 8" through opening.

STEP 2

- **LIGHT MOUNT ONLY:** Remove cover by removing two screws (not required for Plug Mount).
- **PLUG MOUNT and LIGHT MOUNT:** Fasten OAB Electrical Box "over the air barrier" using two #8 - 1 1/4" screws.
- **LIGHT MOUNT ONLY:** Replace cover removed at the beginning of Step 2.

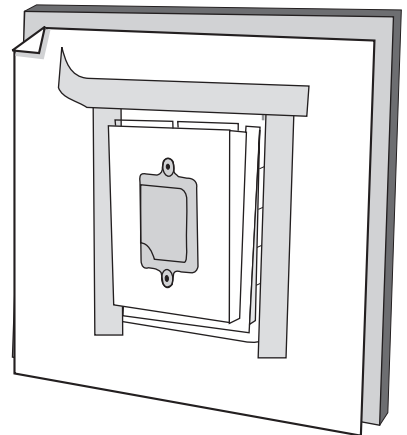
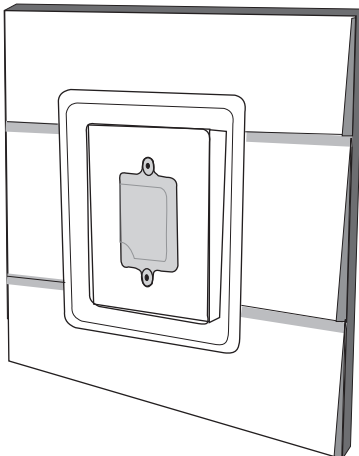


STEP 3

- Remove Trim Ring from self-flashing cover (flex slightly to disengage the Trim Ring).
- Place self-flashing Plug Mount/Light Mount cover over OAB Electrical Box, ensuring the side marked TOP is positioned correctly (TOP must be correct to divert water out over exterior finish).
- Level and install Light Mount/Plug Mount using four #8 - 1 1/4" screws.

STEP 4

- Install Self-Adhesive Membrane over the nailing flange on right and left sides, then overlapping across the top.



STEP 5

- Once exterior finish (siding, stucco, brick, rock, etc.) is complete, install trim ring by simply snapping it into place.
- Reversible trim ring will accommodate 5/8", 3/4", 1" or 1 1/4" thickness.