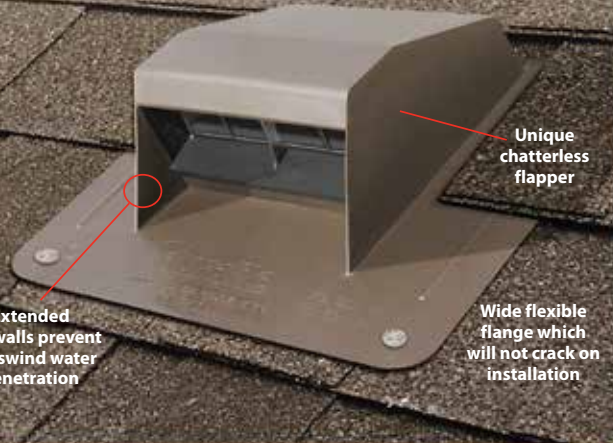


duraflo



Dryer Exhaust Vent

Ideal for condominiums, town-houses, apartments and 2nd story laundry rooms.



- Seamless leakproof body
- Exhausts clothing dryer through the roof
- Large grill openings for safe dryer venting

Roof Dryer Vent with Flapper & Attached Collar

- Attaches to 4" or 5" duct

DESCRIPTION	PART #	CTN. QTY
Black	6013BL	6
Brown	6013BR	6
Weatherwood	6013WW	6

Roof Dryer Vent with Flapper

DESCRIPTION	PART #	CTN. QTY
Black	6012BL	4
Brown	6012BR	4

Bathroom Exhaust & Roof Dryer Vent Adapter Collar

- Attaches to 4" or 5" duct

DESCRIPTION	PART #	CTN. QTY
Black	6010-1BC	8

duraflo



Rangehood Exhaust Vent & Attached Collar

- Seamless leakproof body
- Vents kitchen range hoods and other large exhaust fans through the roof
- Attaches to 6", 7" or 8" duct
- Dual flapper system to prevent back draft and weather infiltration

DESCRIPTION	PART #	CTN. QTY
Black	6020BL	2
Brown	6020BR	2



GOOSENECK Rangehood Exhaust Vent Adapter Collar

- Attaches to 6", 7" or 8" duct

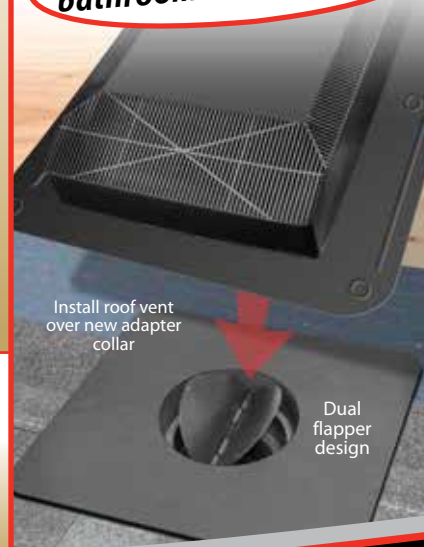
DESCRIPTION	PART #	CTN. QTY
Black	6021-4BC	8



duraflo Adapter Collar WITH BUILT-IN FLAPPER



Turn a roof vent into a bathroom exhaust vent!



Combine the weather protection of PROslantBack with bathroom exhaust fans!

- Built-in flapper prevents back draft
- Large nailable flange works with any roofing system
- Ideal for new home construction and existing homes
- Easily installs from the top of the roof deck or from inside the attic
- Fits 4", 5" or 6" flexible duct
- Available in black only

DESC.	PART #	SIZE	CTN. QTY.
Black	6035BL	14" x 14"	4



Exhaust Vent series



duraflo
www.duraflo.com

E-mail: duraflo@canplas.com

canplas

DUR-EV-ENG-10-21

Canplas Industries Ltd.
500 Veterans Drive, P.O. Box 1800
Barrie, Ontario
Canada L4M 4V3
1-800-461-5300
Tel: (705) 726-3361
Fax: (705) 726-2186

duraflo
WE KNOW VENTILATION



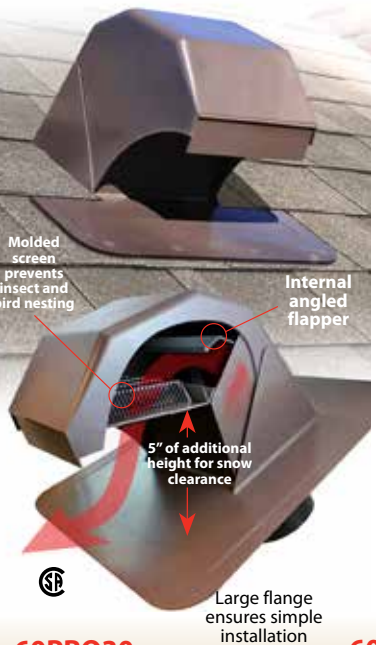
duraflo® Gooseneck

ROOF EXHAUST VENT



For high performance bathroom fans and standard rangehood fans

- Weather protection with 5" of additional height for snow clearance
- Patented design adds additional weather protection, directs and deflects precipitation away from vent openings
- Flapper can still open with low performance bath fans
- Attaches to 4", 5" or 6" duct
- Additional collar available which fits a 6", 7" or 8" duct
- Available in: black & brown
- 20 sq. in. of net free area if used as an intake vent (remove flapper)
- US Patent 10,267,533



**60PRO30
GOOSENECK
BATHROOM EXHAUST
VENT - WITH COLLAR**
Can be used with standard rangehood fans

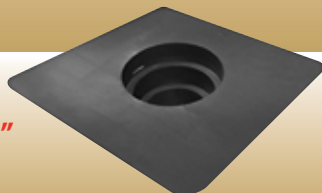
DESCRIPTION	PART #	CTN. QTY.
Black	60PRO30BL	1
Brown	60PRO30BR	1

**60PRO31
GOOSENECK
BATHROOM EXHAUST
VENT - WITHOUT COLLAR**
Can be used with standard rangehood fans

DESCRIPTION	PART #	CTN. QTY.
Black	60PRO31BL	1

**GOOSENECK VENT
ADAPTER COLLAR 4", 5", 6"**

DESCRIPTION	PART #	CTN. QTY.
Black	6030-4BC	8

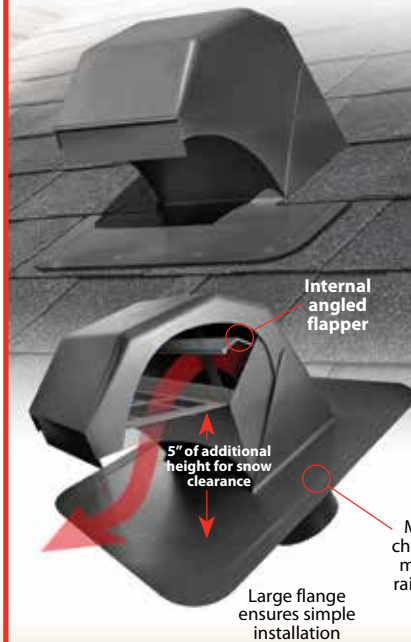


duraflo® Gooseneck

ROOF DRYER EXHAUST VENT

Ideal for condominiums, townhouses, apartment buildings and homes with an upstairs laundry room

- Provides weather protection with 5" of additional height for snow clearance
- Attaches to 4", 5" or 6" duct
- Additional collar available which fits a 6", 7" or 8" duct
- Available in: black & brown
- US Patent 10,267,533



**6032
GOOSENECK
ROOF DRYER EXHAUST
VENT - WITH COLLAR**

DESCRIPTION	PART #	CTN. QTY.
Black	6032BL	1
Brown	6032BR	1

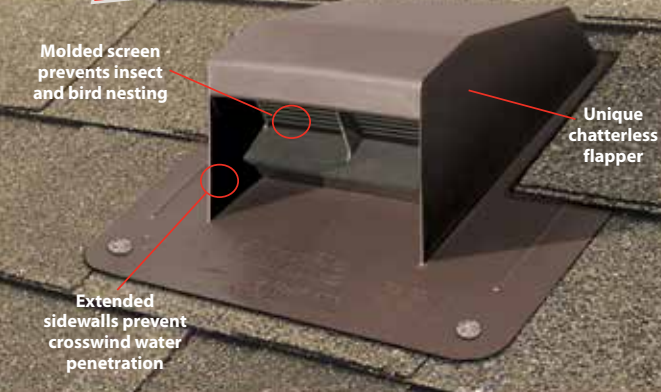


duraflo® Bathroom Exhaust Vent

Molded screen prevents insect and bird nesting

Unique chatterless flapper

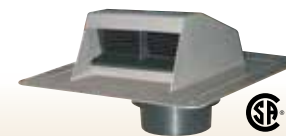
Extended sidewalls prevent crosswind water penetration



- Seamless leakproof body
- Exhausts bathroom fan through the roof
- Attaches to 4" or 5" duct
- Code regulated insect grill

Bathroom Exhaust Vent with Flapper & Attached Collar

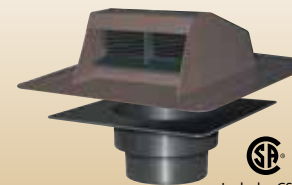
DESCRIPTION	PART #	CTN. QTY.
Black	6011BL	6
Brown	6011BR	6
Weatherwood	6011WW	6



Bathroom Exhaust Vent with Flapper & Unattached Collar

- Collar is detached to allow trades to work independently

DESCRIPTION	PART #	CTN. QTY.
Black	6010BL	8
Brown	6010BR	8



Includes CSA approved 6008 model vent

Bathroom Exhaust Vent with Flapper

DESCRIPTION	PART #	CTN. QTY.
Black	6008BL	4
Brown	6008BR	4
Weatherwood	6008WW	4

